



LINSSSEN OWNERS CLUB UK



Linssen (UK)

Tour 2023

22 – 25 May



Dear participant,

Herewith the detailed information regarding the upcoming Tour from 22-25 May 2023.

(With thanks to Linssen Yachts for the information).

General information about the route and cruising:



- 9 locks.
- Distance 123 km (of which 79 km in the Netherlands and 44 km in Belgium).
- Minimum passage height: 5.05 metres (except lock 20 Maastricht 3.60m, think of your cabrio!).
- VHF radio: requests for lock and bridge operation are handled centrally. If necessary, listen out on the VHF channel of the lock.
- VHF radio: standby and monitor channel 10.
- Stay in the queue, but not too close to the predecessor (approx. 30 m) in order not to be bothered by the stern waves.
- Keep an eye on fishermen, moorings and passing ports. Do not create nuisance waves!
- Make sure your water tank is full, in Maasmechelen there is no possibility to take water.
- Sailing speed 7-8 km/h.
- When passing ports and harbours, reduce speed!
- Power acces is limited.

Willems Route a beautiful waterway

The Willems Route is the tempting alternative for sailing from Roermond or Den Bosch to Maastricht. This splendid route is primarily intended for the recreational waterway user who wants more than just to sail from A to B. It is an easily passable and beautiful waterway that leads past many attractive places in the Netherlands and Belgian Limburg. Our route runs via the Wessems-Nederweert Canal, the Zuid-Willemsvaart Canal and the historic sailing route through Maastricht to 't Bassin, the attractive historic inner harbour in the centre of the old town. The vertical clearance in the historic route is only 3.30 m. Therefore, instead of taking

lock 19 in Maastricht, we will take the Bosscherveld lock on the river Meuse and enter the Bassin via lock 20. From Maastricht, we will then return to Maasbracht via the Juliana Canal. The Willems Route is a quiet route with small locks and many mooring possibilities. The area around the waterway is very attractive for recreation. **The route as indicated earlier is final and the mooring places have been reserved.**

Daily Schedule

Day 1

Monday 22 May 2023

09 a.m.: Gather at Van der Laan Yachting (<http://vanderlaanyachting.nl>). Welcome with Limburg Pie and coffee, followed by the briefing!



Please note! Not at Linssen Yachts in Maasbracht.

0930 a.m.: Briefing

10 a.m.: Departure in the direction Bocholt

4 p.m.: (approx.) arrival in the Bocholt marina (<https://www.vvw-bocholt.be/>)

In 1994, the Bocholt municipal authorities built this marina in cooperation with its Dutch neighbour, Weert, and with the support of the European Community.

The port and the motor home park, which was added a few years later, were operated by the municipality until 1 February 2017. Since then, the management has been in the hands of 'VWV-Bocholt vzw'.

Day 2

Tuesday 23 May 2023

10 a.m.: departure Bocholt (<https://www.vvw-bocholt.be/>)

3 p.m.: (approximately) arrival in Reken

Arrive in Oud-Rekem. In 2008, Oud-Rekem was officially declared 'the most beautiful village in Flanders' by 'Toerisme Vlaanderen'. When you walk around, you immediately understand why: the castle d'Aspremont-Lynden, the museum church, the museum pharmacy: the many historical buildings together form a beautiful historical village that takes you back in time.

Walk around in Oud-Rekem and you imagine yourself in an open-air museum. At the jetty is the old tollhouse.

Bollards on a new jetty. No facilities.

In the evening, we dine at **6:30 p.m.** Either BBQ on jetty or a small restaurant (TBD)

Day 3

Wednesday 24 May 2023

9.30 a.m.: Demonstration (if required) of the convertible system for 40.9/45.0 aboard AURA.

10.00am : Depart in groups at different times if more than 3 yachts per lock.

1st departure group (1): Reken at 10.30am & arrival Bassin Maastricht at 12.30/ 13.30

2nd departure group (2): Reken at 11.30am & arrival Bassin Maastricht at 13.30/ 14.30

3rd departure group (3): if required?

Attention: Please be present in front of the lock of Bassin at 4.30pm at the latest for the last lock. At 6.30pm, departure by foot to the Vrijthof (approx. 15m). We dine at Grand Café d'n Ingel, Vrijthof 13, 6211 LD Maastricht.

Day 4

Thursday 25 May 2023

Morning **9.00 a.m.** There will be breakfast available by Dock 5 in the Bassin.

Day time: Sightseeing

Evening: Free

Day 5

Friday 26 May 2023

Morning 'Spring Tour' disbanded and everyone can go home or take off to another destination.

ROUTE DETAILS

Waterway details

Wessem-Nederweert Canal

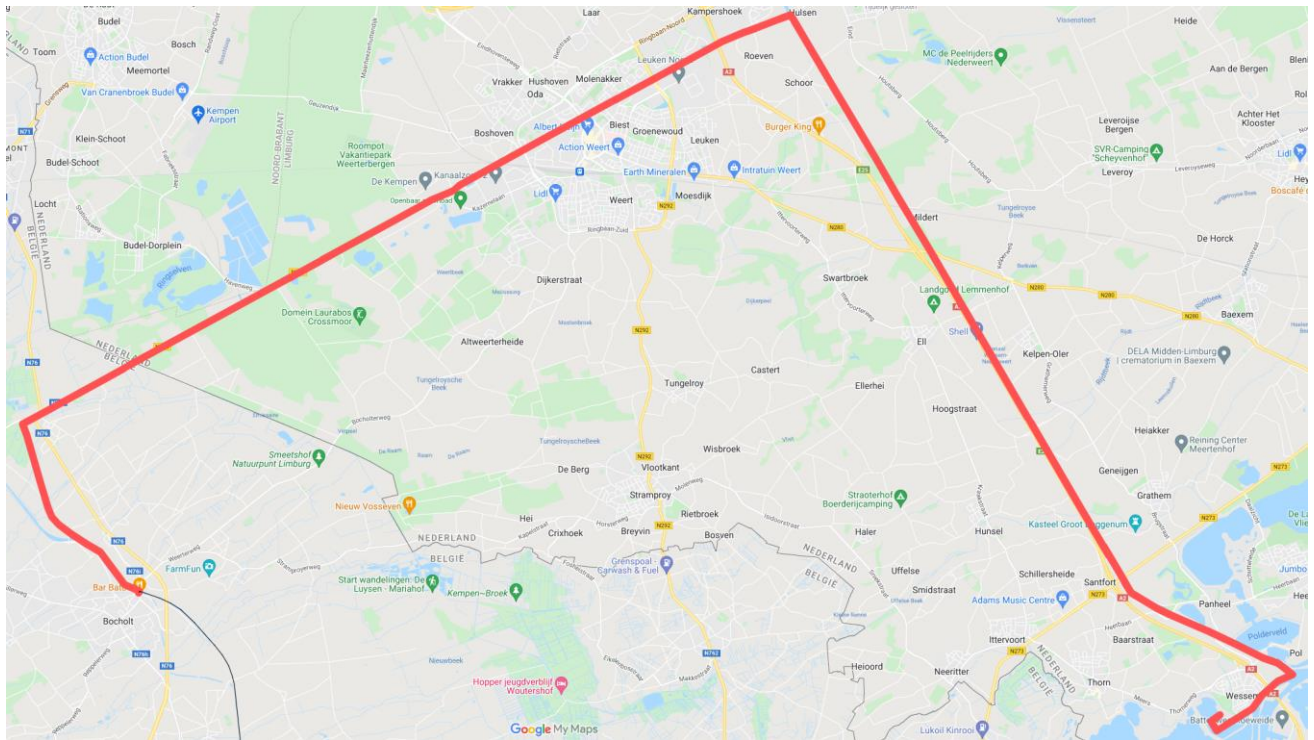
The Wessem-Nederweert Canal is a connecting canal between the towns of Wessem and Nederweert in the Dutch province of Limburg.

The canal is 17 km long and was officially opened on 22 October 1929. It connects the Zuid-Willemsvaart and Noordervaart at Nederweert with the Meuse at Wessem.

- Length 17 km.
- Panheel lock. VHF channel 84. Almost 8 meter drop (third largest in the Netherlands)
2 gullies.



Route day 1



- Km 11 Kelperbrug: air-draft 5.05 m.
- Km 17 to port side: the Zuid-Willemsvaart, direction lock 15.
- Km 61.6 lock 15 Nederweert: drop 5.04 m.

Lock 15 Nederweert

The Nederweert lock has a drop of 5.04 metres.



- Km 58.3 Biesterbrug, remotely operated; join the group to reduce opening time.
- Km 57.5 Passing harbour Bassin Weert.
- Km 57.4 City bridge Weert.
- Km 58.8 Lock 16 Weert.

Lock 16 Weert

The lock in Weert has a drop of 2.07 metres.



- Km 43.75 Border Netherlands-Belgium
- Km 41.55 Lock Lozen 50m x 7m / drop 2.90m

Lock 17 Lozen

For the lock Lozen, it is **important that you tie two ropes together**. The lock keeper will pick up your line with a hook and hang it around the bollard of the lock. Make sure you have the long ropes ready before you enter the lock, both fore and aft on the starboard side.



- Significant drop: **long lines needed**, 20 metres.
- Tie two lines together.
- The lock keeper takes the lines with a hook and ties them around the bollard.
- There may be a considerable current at the front of the lock during the procedure.
- The lock is 50 metres long, 7 metres wide and has a drop of 2.90 metres.



- Km 39.25 Bocholt Lock

Lock 18 Bocholt

For the lock Bocholt, it is **important that you tie two ropes together**. The lock keeper will pick up your line with a hook and hang it around the bollard of the lock. Make sure you have the long ropes ready before you enter the lock, **both fore and aft on the starboard side**.

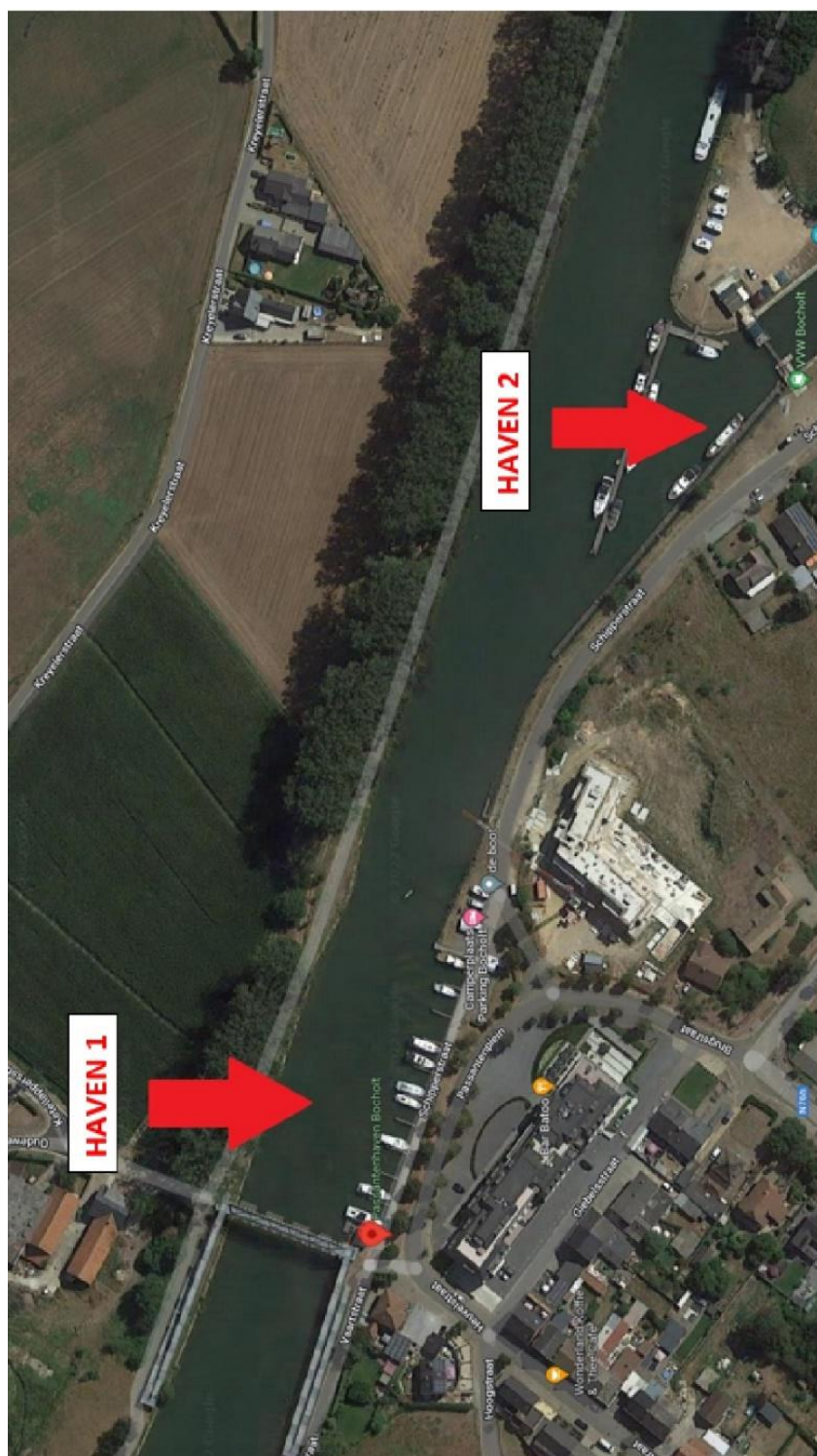


- Significant drop: **long lines are required**, 20 metres.
- Tie two lines together.
- The lock keeper will take the lines with a hook and place them around the bollard.
- There may be a considerable current at the front of the lock during the procedure.
- The lock is 50 metres long and 7 metres wide.



- 37,4 km Bocholt Marina: **slow sailing. MOORING AT THE END OF DAY 1!**
- The power boxes in Bocholt harbour are 10 Ampere.

MOORING BOCHOLT

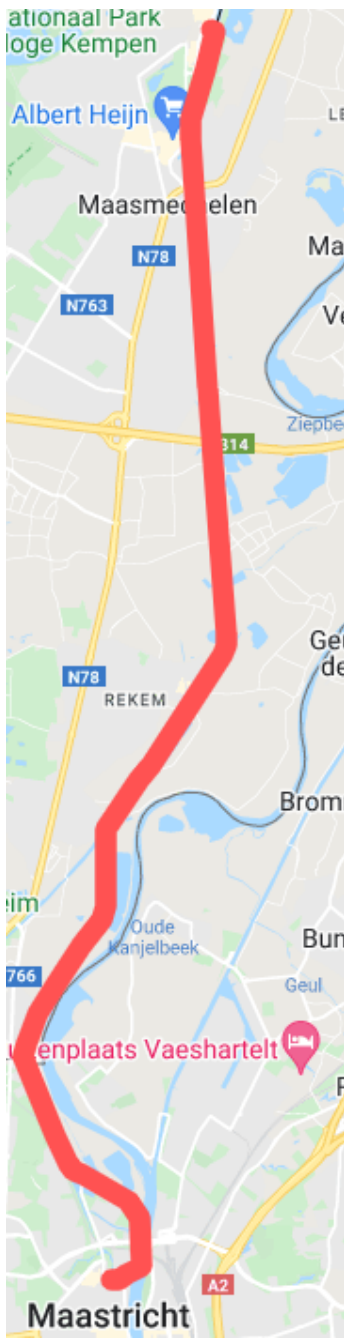


Route day 2



- 32.8 km Bree Marina.
- 29.1 km marina Tongerlo.
- 23.5 km 't Eilandje with a charming little harbour.
- 13.2 km Maasmechelen Village jetty.

Route day 3



- 4.5 Km Jetty Oud-Rekem: mooring for enthusiasts.
- 3.0 Km port side.
- 2.7 Km border Belgium - Netherlands.
- 0.81 Km lock Bosscherveld.

Bosscherveld Lock



The Bosscherveld lock has a drop of 3.30 m. Please note! **Do not** go straight to lock 19, but turn to port at the Bosscherveld lock. On the river Meuse, pass under the Noorderbrug and to starboard: 't Bassin.



Lock 20 Bassin Maastricht



1

Important



At lock 20 Bassin Maastricht we have to lower the mast and possibly also the convertible.

The clearance in the tunnel under the road is about 3.60 metres. On the wall (starboard side) you can see a red-white line that indicates the maximum clearance SEE PHOTO 2:

PLEASE NOTE THAT YOU MUST ARRIVE BEFORE 4:30 p.m AT LOCK 20!



2

- Lock 20 Bassin Maastricht

MOORING DAY 3!

Linssen Grand Sturdy 40.0 AC INTERO (Bassin, Maastricht).

